

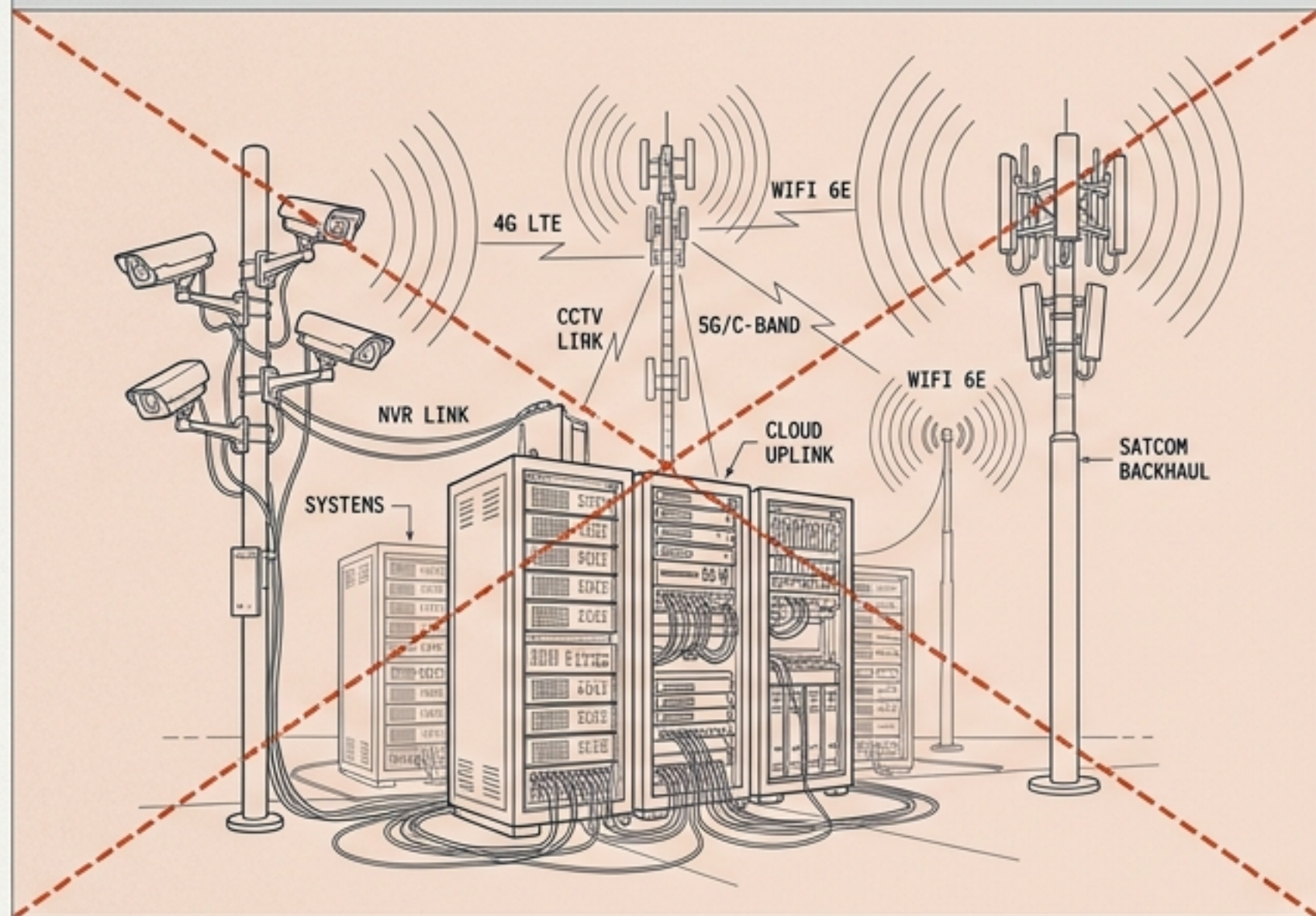
SOLO-ID EX: Untethered Biometric Digital Identity

**Tactical face recognition
in the palm of your hand.**

MISSION BRIEFING // MOBILE APPLICATION DEPLOYMENT

Breaking the Infrastructure Tether

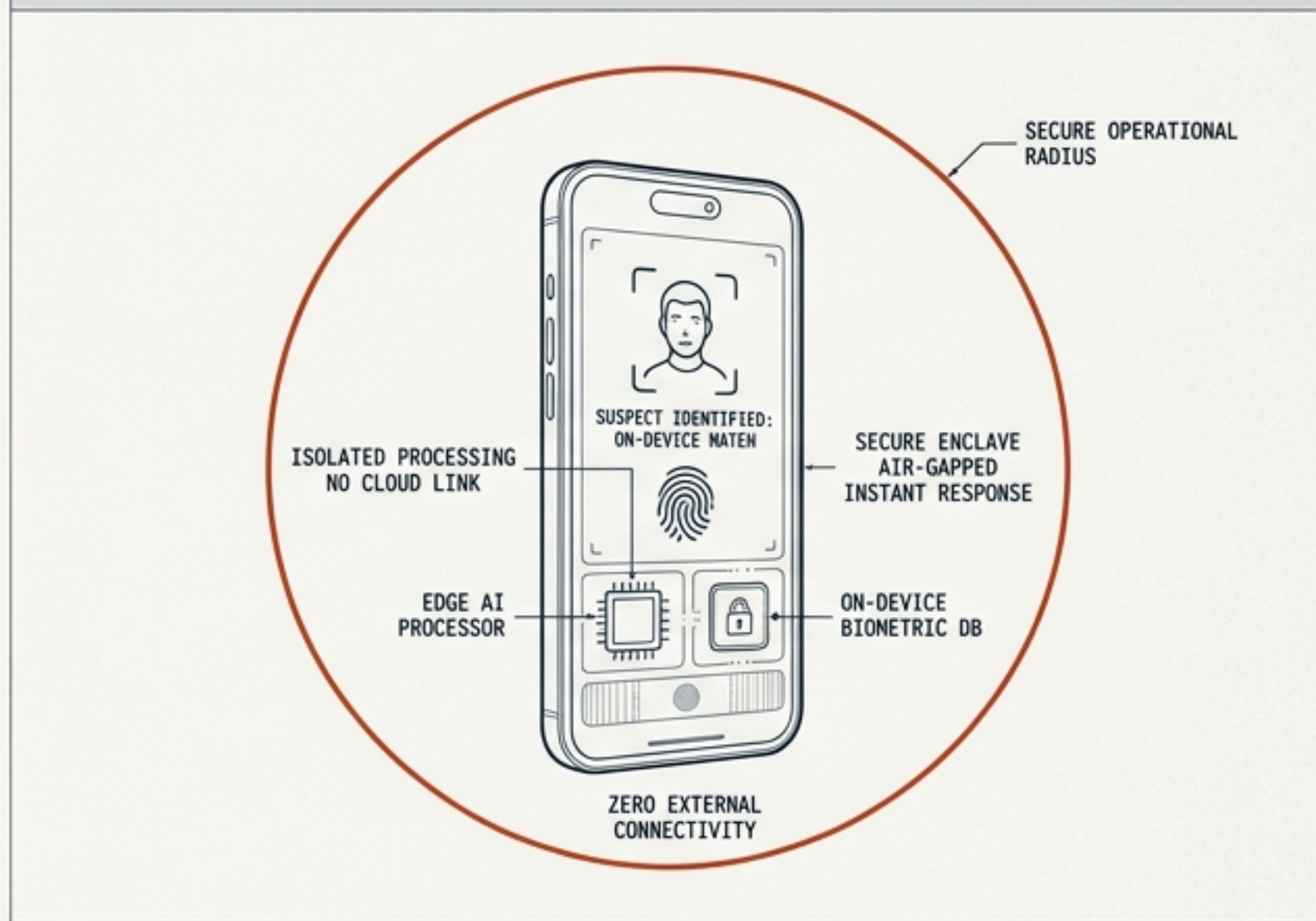
THE STATUS QUO



Operators identifying suspects in the field traditionally rely on placing fixed cameras or utilizing heavy, tethered technological tools. This dependency on external infrastructure creates bottlenecks, signal reliance, and logistical overhead, severely limiting operational flexibility and immediate response capabilities.

VULNERABILITY: NETWORK DEPENDENCY, LATENCY, & INFRASTRUCTURE FOOTPRINT. STATUS: RESTRICTED.

THE TACTICAL REALITY



Real-world operations demand immediate, localized intelligence without waiting for server responses or establishing network connections. This approach leverages on-device processing and air-gapped capabilities, ensuring mission-critical data availability and security in completely disconnected environments.

ADVANTAGE: SELF-SUFFICIENT INTELLIGENCE, REAL-TIME RESULTS, & OPERATIONAL DISCRETION. STATUS: TACTICAL.

The SOLO-ID EX Asset

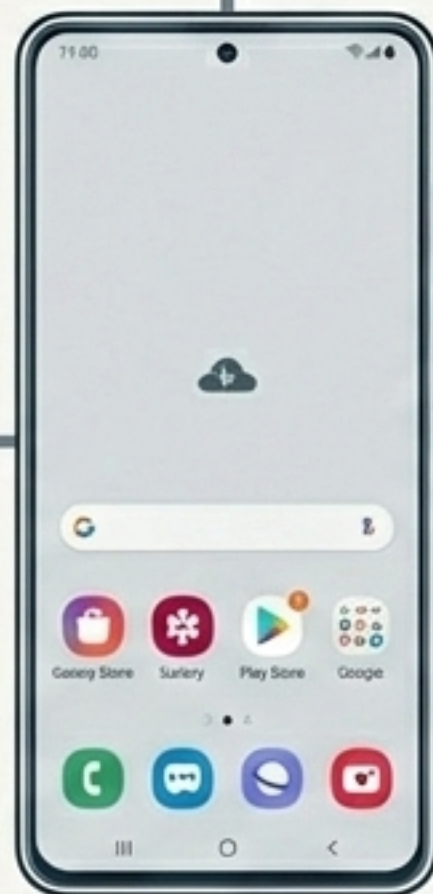
CORE SPEC: An Android-based mobile application that transforms a standard commercial device into an independent biometric unit.

01 / COMPLETELY MOBILE

No fixed installation required. Moves dynamically with the operator.

02 / SELF-CONTAINED

COTS (Commercial Off-The-Shelf) hardware that is easy to hide and operate covertly.

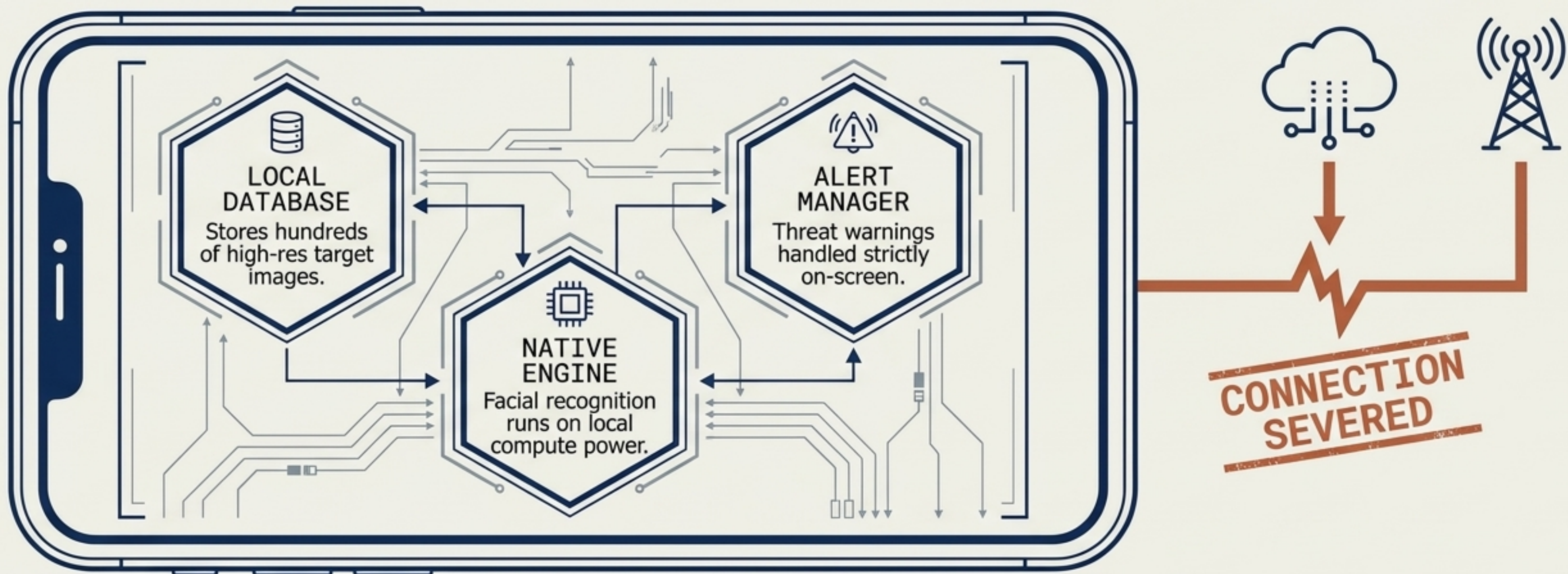


03 / READY NOW

Requires zero prior infrastructure setup to deploy in the field.

A Strictly Closed-Loop Ecosystem

The system operates entirely independently. It does not depend on internet or external communications. Can be operated in any environment, including dead zones.



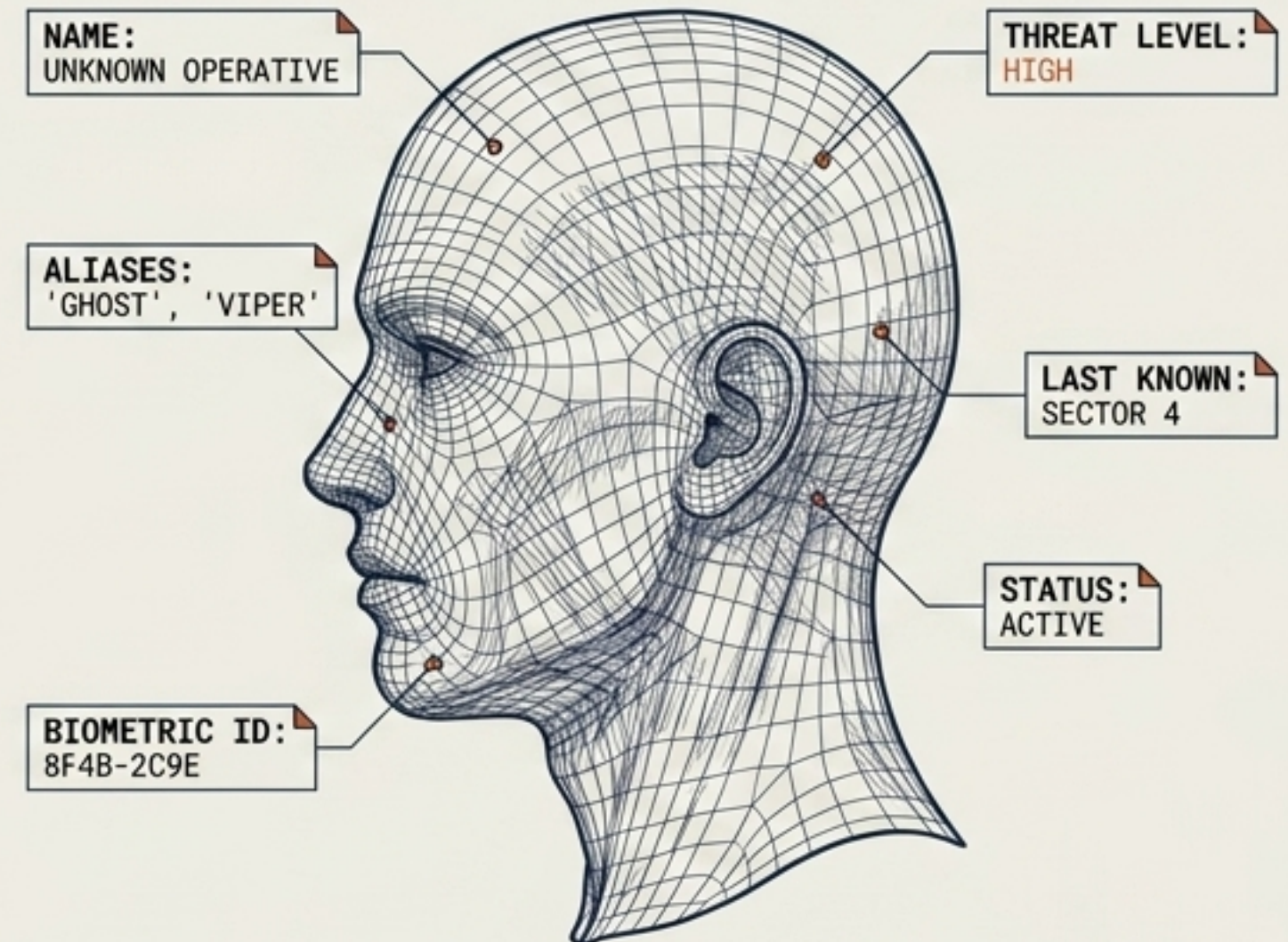
Phase 1: Asset Ingestion and Database Building

STEP A: INGEST



DOWNLOAD & INGEST: Instantly load target photos via file transfer, gallery, or live camera.

STEP B: ENRICH

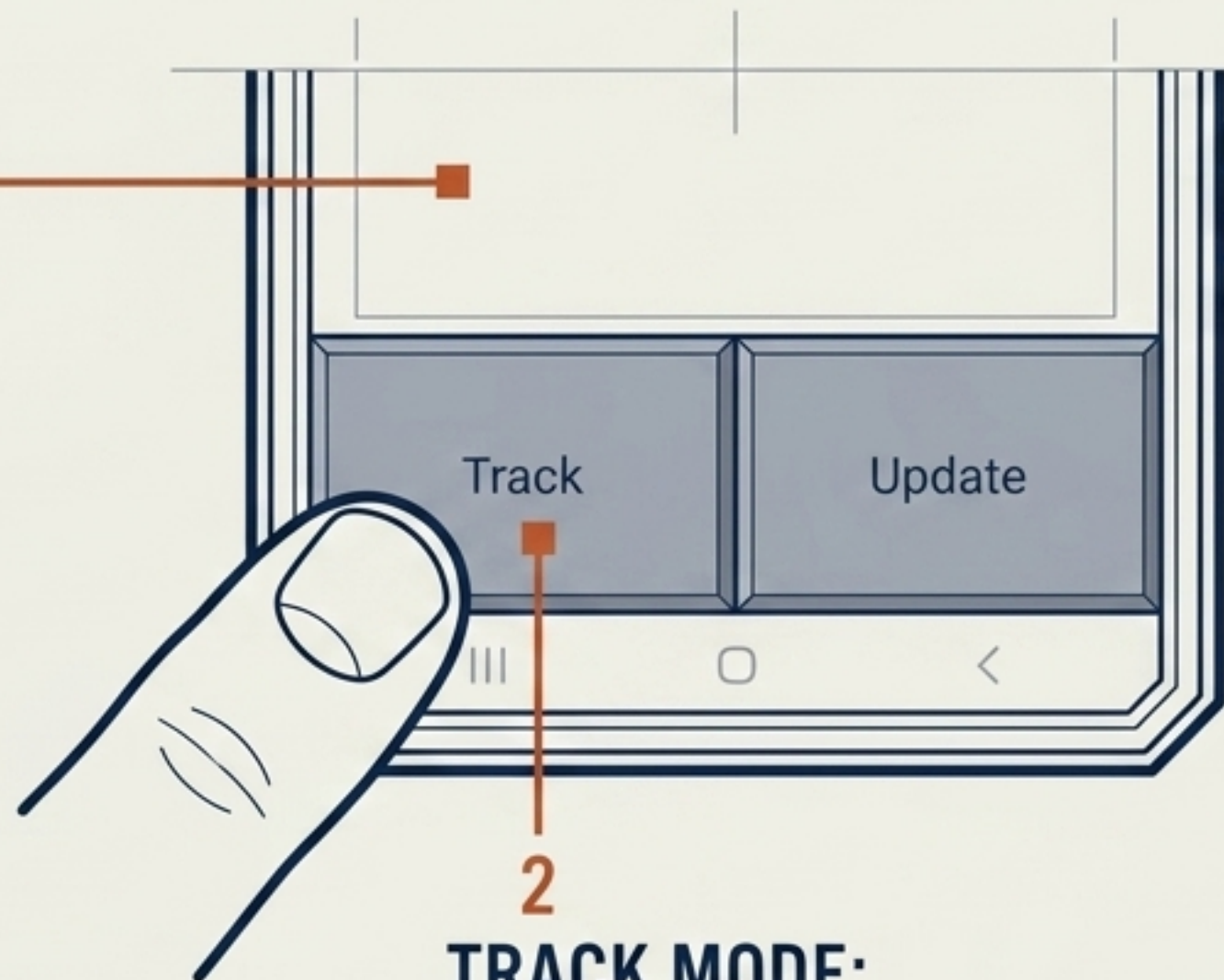


ENRICH INTEL: Attach critical operational details and multiple angles to dramatically increase field recognition accuracy.

Phase 2: Live Environmental Scanning

TARGET SELECTION: 1

OPERATOR SELECTS THE SPECIFIC LOCAL DATABASE APPROPRIATE FOR THE CURRENT MISSION PROFILE.



TRACK MODE:

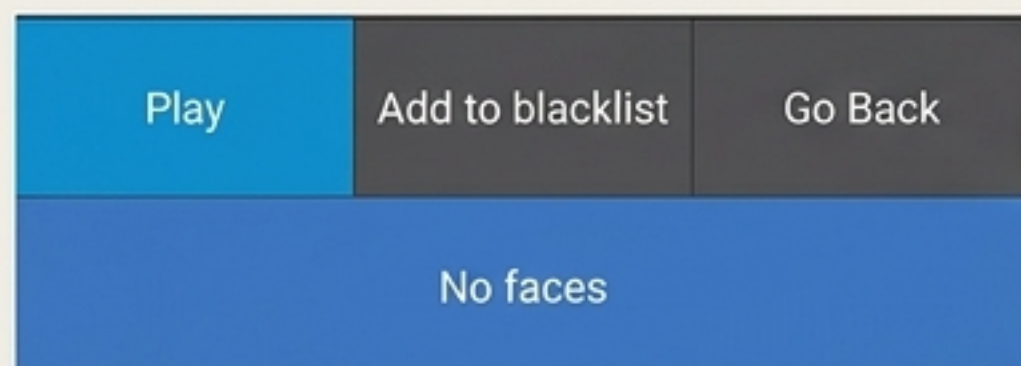
ENGAGING THIS FUNCTION INITIATES CONTINUOUS ENVIRONMENTAL SCANNING.

3 VIDEO-STREAM POWERED:

THE ENGINE ACTIVELY PROCESSES REAL-TIME VIDEO CHANNEL TRANSMISSION TO IDENTIFY FACES IN MOTION, RATHER THAN RELYING ON STATIC SNAPSHOTS.

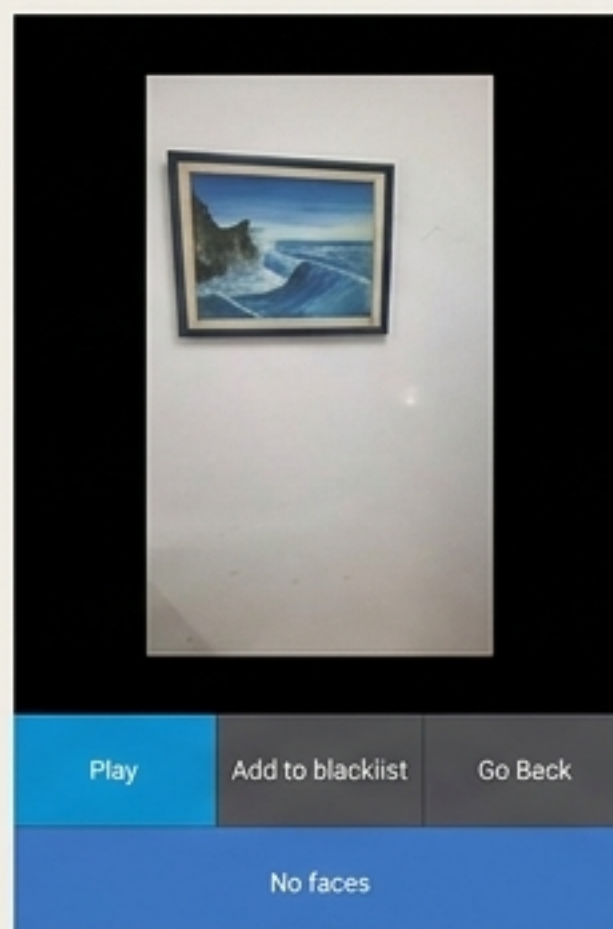
Phase 3: Instant Threat Categorization

IMMEDIATE ACTION



Upon positive identification, operators utilize on-screen controls to manage the encounter instantly.

DYNAMIC BLACKLISTING



Rapidly categorize suspects directly into the local database without dropping the video feed.

WARNING MANAGEMENT

Alert Log

- 10:42:15 AM [WARNING]: Connection Flap Detected
- 10:43:05 AM [ALERT]: Low Battery Warning
- 10:44:30 AM [SYSTEM]: Database Sync Complete
- 10:45:10 AM [WARNING]: High Latency
- 10:46:00 AM [CRITICAL]: Unauthorized Access Attempt

Seamlessly handle system flaps and alerts to maintain situational awareness without operational interruption.

The SOLO-ID EX Tactical Advantage

DATA:
CORN: 9867908
TRXE08

8.88338M / -3.83672M

COVERT

Commercial off-the-shelf profile makes it exceptionally easy to hide in plain sight.

DATA: PROFILE SHIELDING

AGILE

Intuitive and exceptionally easy to operate under pressure.

DATA: RAPID DEPLOYMENT

AUTONOMOUS

Absolute independence from communication networks.

DATA: COMMS-FREE OPERATION

DYNAMIC

Powered entirely by live video channel transmission, not static delays.

DATA: REAL-TIME STREAMING

HIGH CAPACITY

Effortlessly holds and processes hundreds of target images simultaneously.

DATA: ON-DEVICE PROCESSING

TOTAL
OPERATIONAL
SUPREMACY

Z00RTA: 88.134, 61
6TARTB+: 19.9553.67

Operational Deployment Matrix

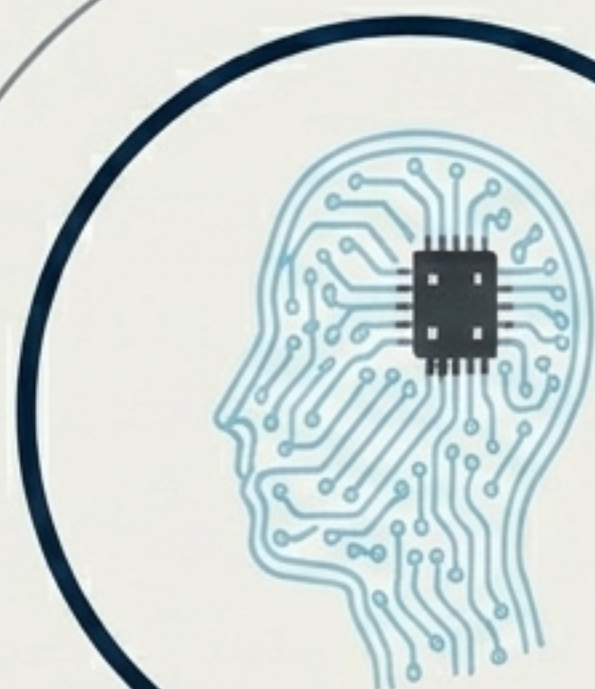
NON-SECURITY / COMMERCIAL OPERATIONS	COVERT & TACTICAL SECURITY OPERATIONS
1. Facility access control	1. Covert street-level suspect identification by field officials
2. VIP and guest identification	2. Identity verification within secure, sensitive complexes
3. Rapid person identification within vehicles at checkpoints	3. Identifying deviations from routine patterns in monitored areas

SCALABLE CAPABILITY: A single software asset supporting multiple threat postures.

Unrestricted Biometric Intelligence

DATA:
CORN: 9887909
TRXE00

0.08330M / -3.83572M



THE BOTTOM LINE

SOLO-ID EX fundamentally shifts biometric identification from fixed infrastructure to an accompanying process.

TOTAL MOBILITY

Because it requires no permanent installation, the asset is never fixed to a specific person or geographic place.

THE RESULT

A highly capable, covert biometric command center that moves exactly wherever the mission demands.